

# THE FAIRFAX



ELEVATION B (With Optional Partial Brick)



ELEVATION A



ELEVATION C (With Optional Partial Stone)



TRINITY  
H O M E S

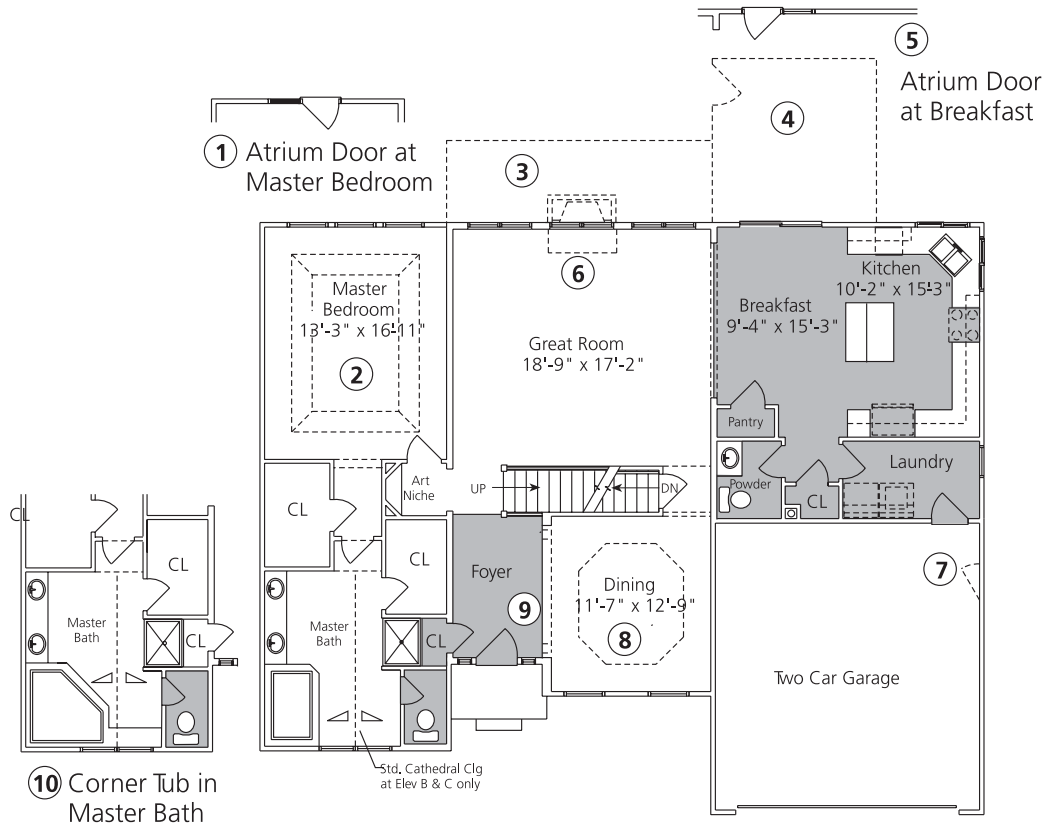
2700 E. DUBLIN GRANVILLE ROAD, SUITE 300, COLUMBUS, OHIO 43231  
PH 614.898.7200 FAX 614.898.7210

[WWW.TRINITY-HOMES.COM](http://WWW.TRINITY-HOMES.COM)

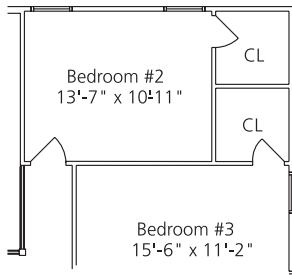
# THE FAIRFAX

## ILLUSTRATED PLAN OPTIONS

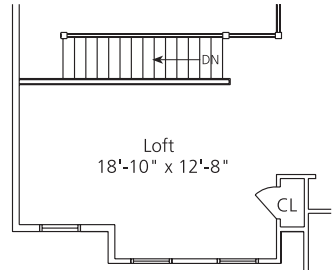
- 1 Atrium Door at Master Bedroom
- 2 Tray Ceiling at Master Bedroom
- 3 6' Family Room Extension
- 4 12'x12' Screened Porch
- 5 Atrium Door at Breakfast
- 6 Fireplace
- 7 Service Door
- 8 Coffered Ceiling in Dining
- 9 Decorative Columns (2)
- 10 Corner Tub in Master Bath
- 11 Rail in lieu of Half Wall at Loft
- 12 Loft Extension
- 13 Den in lieu of Loft
- 14 Walk-in Closets in Bedroom #2 & #3



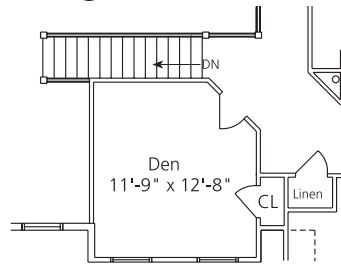
First Floor (Elevation "A")



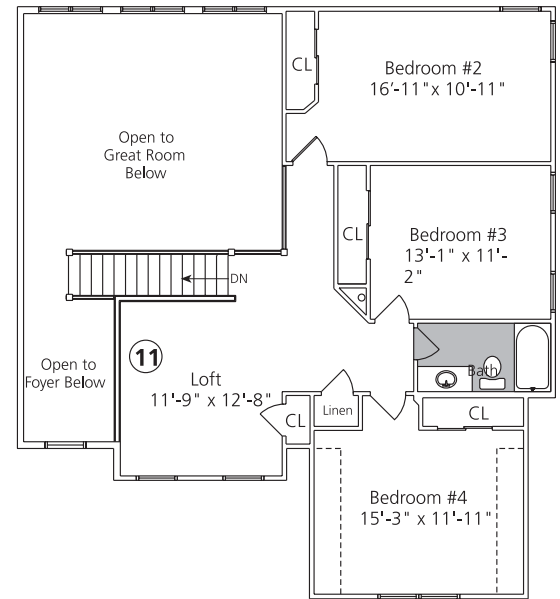
○14 Walk-in Closets in Bedroom #2 & #3



○12 Loft Extension



○13 Den in lieu of Loft



Second Floor (Elevation "A")

△ Indicates Sloped Ceilings

■ Shaded areas indicate hard floor surface

Additional options not illustrated are available, please request from Sales Consultant.



**TRINITY**  
H O M E S

WWW.TRINITY-HOMES.COM

Because we are constantly improving our product, we reserve the right to revise, change, and/or substitute product features, dimensions, specifications, architectural details and designs without notice. This brochure is for illustrative purposes only and is not part of a legal contract. Prices are subject to change without notice. Room dimensions are approximate, are rounded, they will vary with each elevation. The drawings and floor plans for the actual home as constructed are protected by U.S. Copyright Laws. They may not be copied, reproduced or otherwise used by others in any manner. T2610 Northlawn Construction Services 1/28/03



Broker Participation Welcome